

MODELLO MODÈLE
MODEL MODELO
ICH MODELLIERE

BLOCCO DI POTENZA POWER BLOCK BLOC DE PUISSANCE
BLOQUE DE POTENCIA ICH STOPPE VON MACHT

NORMATIVA:
NORMATIVE:
NORMATIV:
NORMATIVA:
REGELUNG:

CEIEN60439-1

CARATTERISTICHE ELETTRICHE CARACTÉRISTIQUES ÉLECTRIQUES
ELECTRICAL FEATURES CARACTERÍSTICAS ELÉCTRICAS
ELEKTRISCHE EIGENSCHAFTEN

480V 60Hz

CLIENTE CLIENT
CUSTOMER CLIENTE KUNDE

PRAMAC

IMPIANTO INSTALLATION
PLANT INSTALACIÓN ICH INSTALLIERE

MATRICOLA MATRICULE
SERIAL NR. MATRÍCULA MATRIKEL

ORDINE CLIENTE ORDRE CLIENT
CUSTOMER ORDER ORDEN CLIENTEBESTELLUNG KUNDE

COMMESSA CLIENTE COMMISE CLIENT
SHOP ORDER COMETIDA CLIENTBEGEHT KUNDEN

	3 POLI	4 POLI
<input checked="" type="checkbox"/>	3 POLES	4 POLES
<input checked="" type="checkbox"/>	3 PÂLES	4 PÂLES
<input checked="" type="checkbox"/>	3 POLOS	4 POLOS
	3 POLE	4 POLE
<input type="checkbox"/> 400A	SG60011901	SG60011909
<input type="checkbox"/> 630A	SG60011902	SG60011910
<input type="checkbox"/> 800A	SG60011903	SG60011911
<input checked="" type="checkbox"/> 1000A	SG60011904	SG60011912
<input type="checkbox"/> 1250A	SG60011905	SG60011913
<input type="checkbox"/> 1600A	SG60011906	SG60011914

☐ CON B.A. AVEC B.O.
WITH D.C. CON B.A.

☐ MIT S.V.Ö.

☐ CON TOROIDE PER PROT. DIFF. AVEC DU TOROIDE POUR PROT. DIF.
WITH TORE FOR DIFF. PROT. CON TOROIDE POR PROT. DIFE.

☐ MIT TOROIDE FÜR SCHUTZ DIFF.

nr. pag.28

REV.	DESCRIZIONE - DESCRIPTION-DESCRIPTION-DESCRIPTION-BESCHREIBUNG	DATA	FIRMA
0		22/11/08	R.L.

TITOLO - TITLE
COBERTINA COVERPAGE
COUVERTURE CUBIERTA
EINBAND

FIRMA Sig.
R.L.

COMMESSA
-

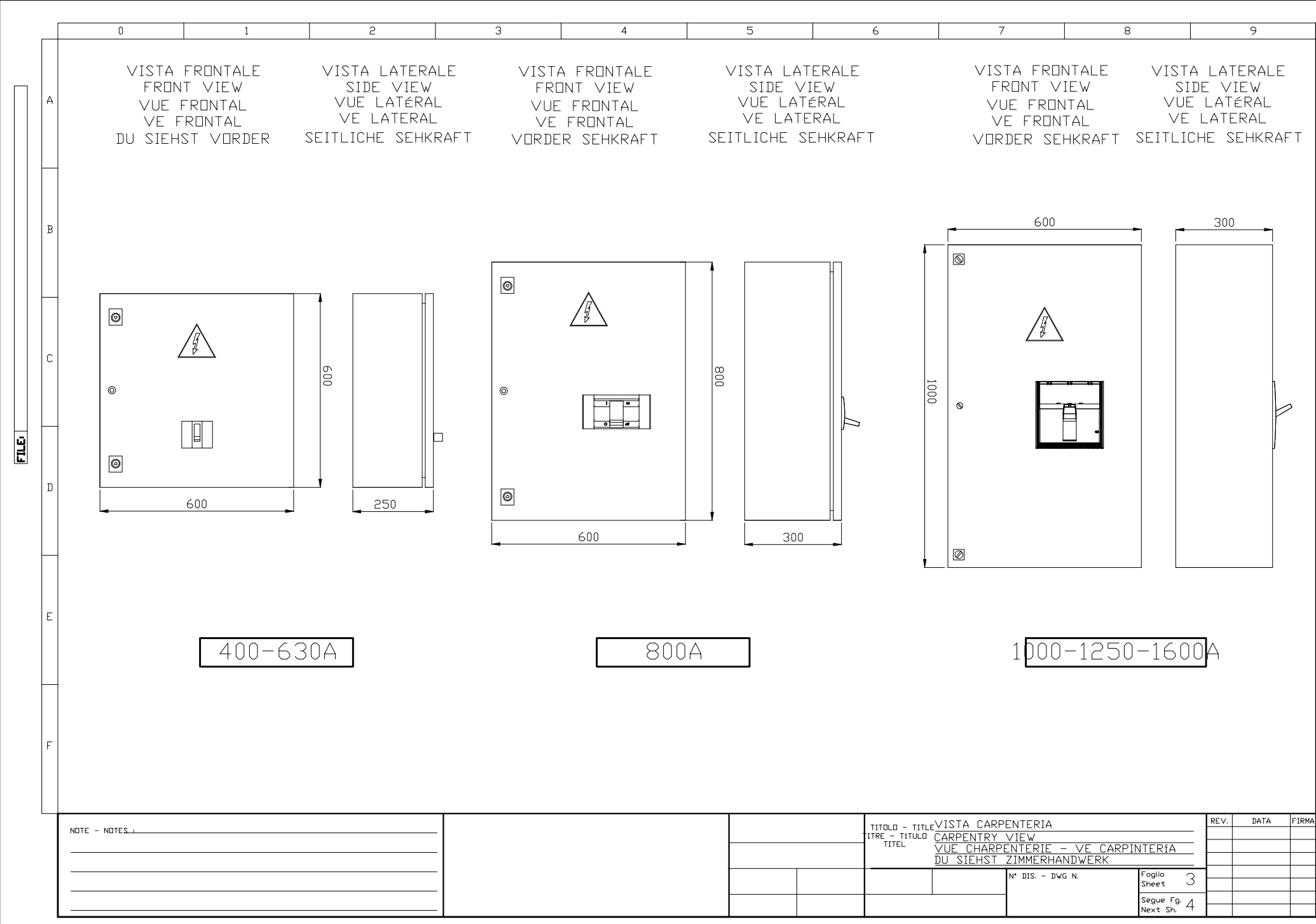
N° DIS. - DWG N.

R02-M01

Foglio
Sheet 1
Segue Fg.
Next Sh. 2

SOMMARIO PAGINE - SHEET INDEX - SOMMAIRES PAGES - SUMARIAS PÁGINAS - KURZE SEITEN

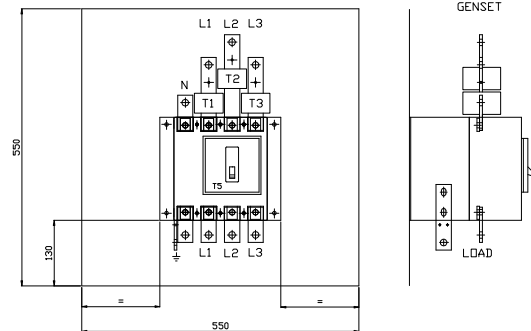
[illegible][illegible]



NOTE - NOTES:	TITOLO - TITLE				REV.	DATA	FIRMA
	VISTA CARPENTERIA						
	CARPENTRY VIEW						
	VUE CHARPENTERIE - VE CARPINTERIA						
	DU SIEHST ZIMMERHANDWERK						
	N° DIS. - DWG N.		Foglio Sheet		3		
			Segue Fg. Next Sh.		4		

Proprietà della S.I.C.E.S. S.r.l. Senza autorizzazione della stessa il presente disegno non potrà essere comunque utilizzato per la costruzione dell'oggetto rappresentato né venire comunicato a terzi o riprodurlo. La società proprietaria tutela i propri diritti a pignorare di legge. All proprietary right by S.I.C.E.S. S.r.l. This drawing shall not be reproduced, or in any way utilized for the manufacture of the component or unit here in illustrated and must not be released to other parties, without consent. Any infringement will be legally pursued.

400-630A 4P



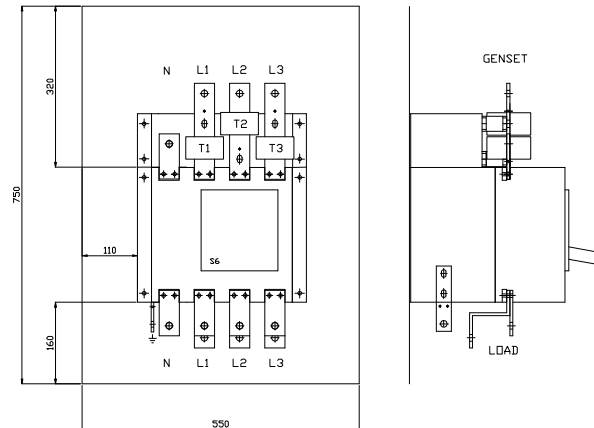
Nominal Current : 400A

Generator cables / busbars dimensions :	1x30x6(F)/1x30x6(N) mm
Load cables / busbars dimensions :	1x30x6(F)/1x30x6(N) mm
Ground cable / busbar dimension :	30x5 mm

Nominal Current : 630A

Generator cables / busbars dimensions :	1x30x10(F)/1x30x10(N) mm
Load cables / busbars dimensions :	1x30x10(F)/1x30x10(N) mm
Ground cable / busbar dimension :	30x5 mm

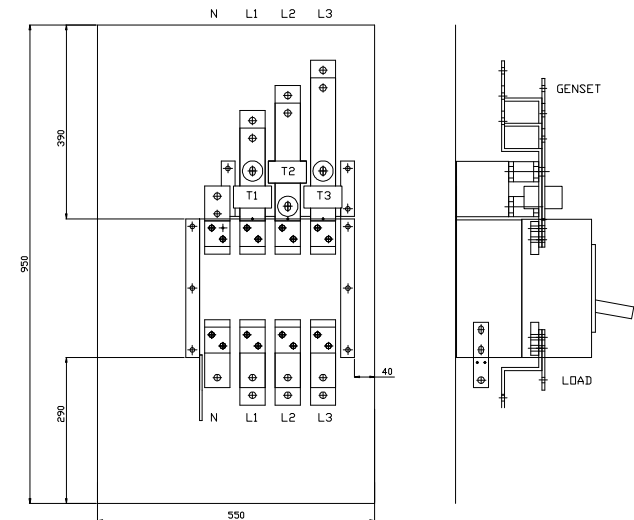
800A 4P



Nominal Current : 800A

Generator cables / busbars dimensions :	1x40x8(F)/1x40x6(N) mm
Load cables / busbars dimensions :	2x40x6(F)/1x40x6(N) mm
Ground cable / busbar dimension :	30x5 mm

1000-1250-1600A 4P



Nominal Current : 1000-1250A

Generator cables / busbars dimensions :	2x50x6(F)/1x50x6(N) mm
Load cables / busbars dimensions :	2x50x6(F)/1x50x6(N) mm
Ground cable / busbar dimension :	30x5 mm

Nominal Current : 1600A

Generator cables / busbars dimensions :	2x50x8(F)/1x50x8(N) mm
Load cables / busbars dimensions :	2x50x8(F)/1x50x8(N) mm
Ground cable / busbar dimension :	30x5 mm

NOTE - NOTES :

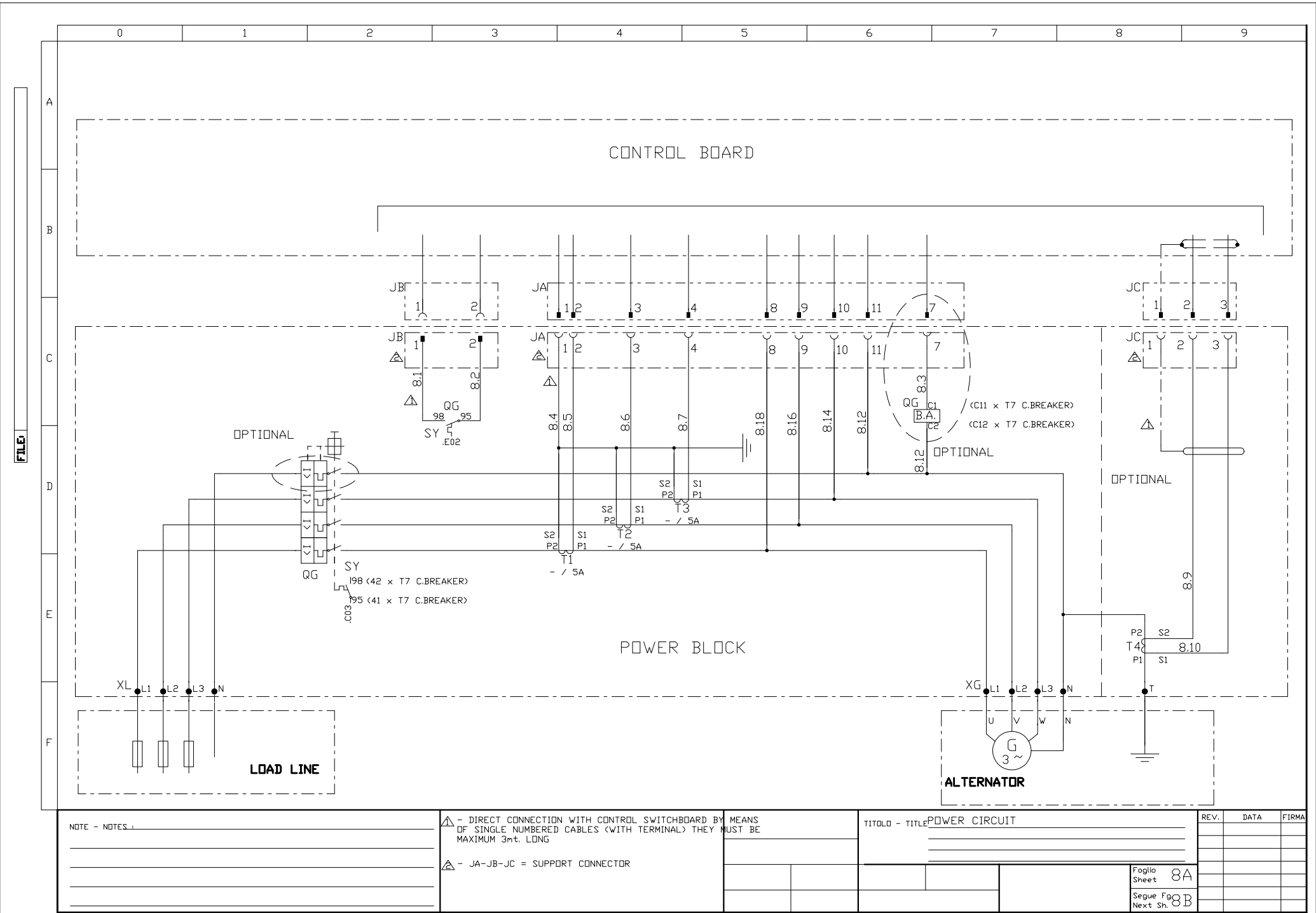
TITOLO - TITLE INTERNAL VIEW

REV. DATA FIRMA

N° DIS. - DWG N.

Foglio 5A
Sheet
Segue Foglio 5B
Next Sh.

		0	1	2	3	4	5	6	7	8	9			
FILE	A	SYMBOL DESCRIPTION		GRAPHIC SYMBOL	SYMBOL DESCRIPTION		GRAPHIC SYMBOL	SYMBOL DESCRIPTION		GRAPHIC SYMBOL				
	B	TERMINAL BOARD			MUSHROOM PUSH-BUTTON			SIGNALLING LAMP						
		SOCKET / PLUG OF CONNECTOR			OPEN CONTACT WITH RECALL SPRING			ACOUSTIC ALARM						
		VOLTAGE TRANSFORMER			CLOSED CONTACT WITH RECALL SPRING			LIGHT EMITTING DIODE (LED)						
	C	CURRENT TRANSFORMER			OPEN CONTACT OPERATING BY TURNING			FUSE						
		CONTROL' S COIL			CLOSE CONTACT OPERATING BY TURNING			ELECTRIC VALVE						
		EXCITEMENT DELAYED TIMER			SELF OPERATING THERMAL SWITCH MAKE CONTACT			HEATING RESISTANCE						
	D	DESEXCITEMENT DELAYED TIMER			OPEN CONTACT CONTROL BY TEMPERATURE			VARIABLE RESISTANCE (ANALOGIC MEASURES)						
		OPEN CONTACT DELAYED TO THE CLOSING			CLOSE CONTACT CONTROL BY FUEL LEVEL			BATTERY						
		CLOSE CONTACT DELAYED TO THE OPENING			CLOSE CONTACT CONTROL BY PRESSURE			THERMOCOUPLE						
	E	OPEN CONTACT DELAYED TO THE REOPENING			OPEN CONTACT CONTROL BY FLUID PASSAGE			VOLTMETER						
		CLOSE CONTACT DELAYED TO THE RECLOSING			POSITION SWITCH CONTACT			AMMETER						
		CLOSE CONTACT DELAYED TO THE OPENING AND CLOSING			MAKE CONTACT OF CONTACTOR			GROUND CONNECTION						
F														
NOTE - NOTES:								TITOLO - TITLEGRAPHIC SYMBOLS				REV.	DATA	FIRMA



NOTE - NOTES:	<div><div><div><div><div></div><div></div></div><div>- DIRECT CONNECTION WITH CONTROL SWITCHBOARD BY MEANS OF SINGLE NUMBERED CABLES (WITH TERMINAL) THEY MUST BE MAXIMUM 3mt. LONG</div></div><div><div><div></div><div></div></div><div>- JA-JB-JC = SUPPORT CONNECTOR</div></div></div></div>	TITLO - TITLEPOWER CIRCUIT	REV.	DATA	FIRMA
			Foglio 8A Sheet Segue Foglio 8B Next Sheet		

Proprietà della S.I.C.E.S. S.r.l. Senza autorizzazione della stessa il presente disegno non potrà essere comunque utilizzato per la costruzione dell'oggetto rappresentato nè venire comunicato a terzi o riprodotto. La società proprietaria tutela i propri diritti a rigore di legge. All proprietary right by S.I.C.E.S. S.r.l.. This drawing shall not be reproduced, or in any way utilized for the manufacture of the component or unit here in illustrated and must not be released to other parties, without consent. Any infringement will be legally pursued.